

COMMUNICATIONS

- What do we do?
- What we want you to know.
- What do YOU want to know?



WHAT DO WE DO?

The City tries to effectively communicate with the community about

- Emergencies
- Projects and Work
- City Events
- Fun Stuff that We Just Want to Share!



HOW DO WE COMMUNICATE?



THE CITY USES MULTIPLE WAYS TO COMMUNICATE

1. City of Sweet Home Website

www.sweethomeor.gov

2. City Government of Sweet Home, Oregon
Facebook Page

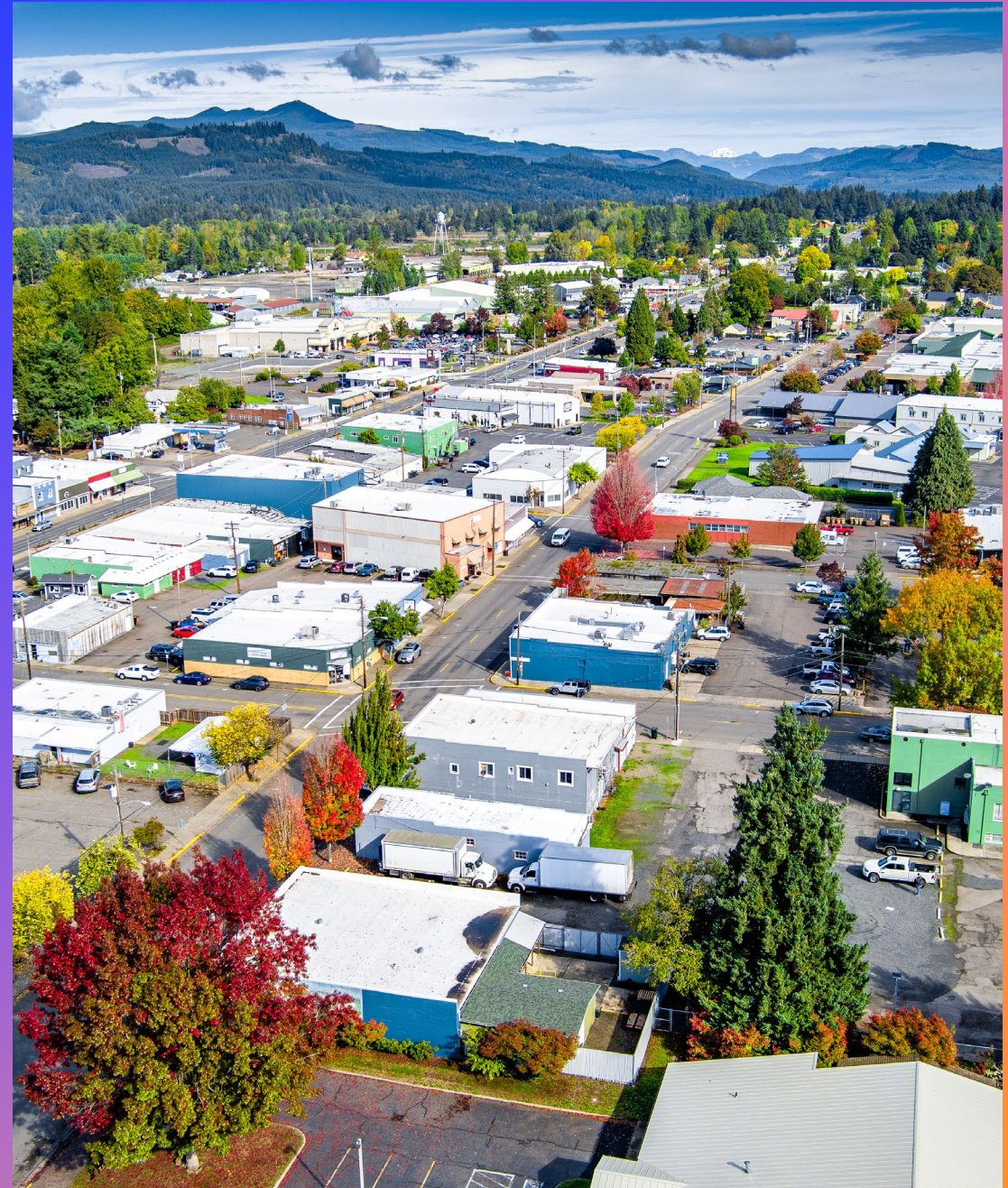
(Police Department and Library also have pages)

2. Our Electronic Sign in Front of City Hall

3. Flyers, Handouts, Door Hangers

4. Local Newspapers

(they normally reach out to us)

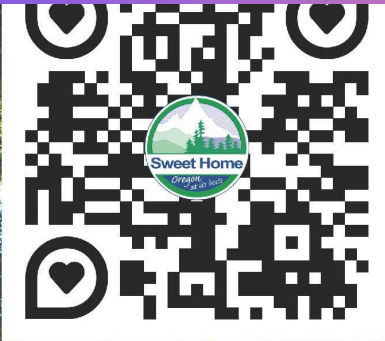


SOCIAL MEDIA THINGS TO KNOW

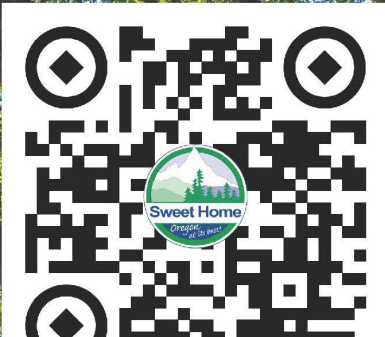
The City only controls the information on our official website and Facebook pages.

Community pages are NOT controlled, moderated, or monitored by the city and information is often not correct or accurate. The city has no ability to moderate or comment on these pages. Use caution when getting information from these pages. If something sounds fishy, it probably is.

Follow us on Facebook for updates and event information using this QR Code



Follow this QR Code for easy access to our website





DID YOU KNOW?

The City of Sweet Home
non-emergency phone number can be
used to report a Public Works
problem after business hours

541-367-5181

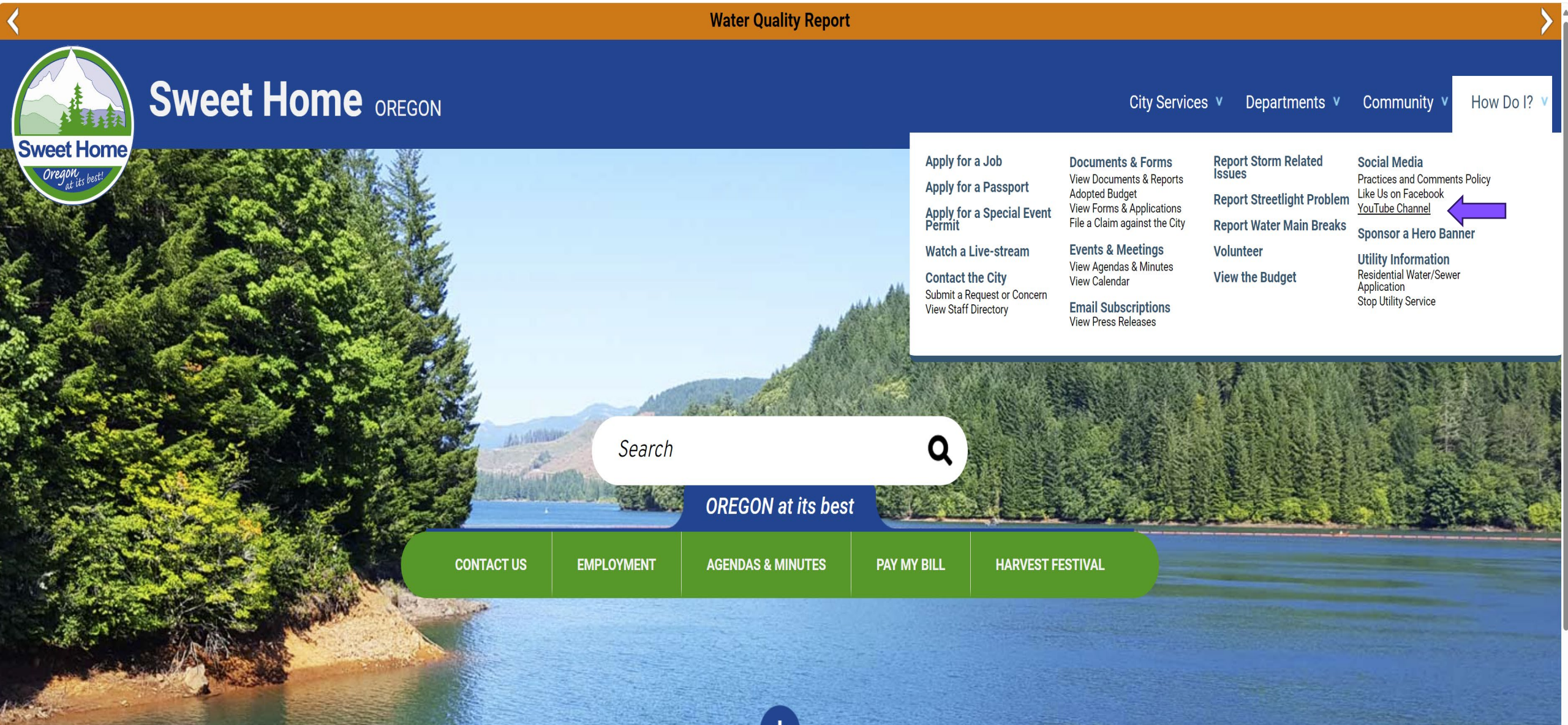


How do I find out about City Council, Committee, and other meetings and events?

The screenshot shows the Sweet Home Oregon website with the following elements:

- Header:** "Sweet Home OREGON" logo and navigation menu with "City Services", "Departments", "Community", and "How Do I?".
- Dropdown Menu:** A purple arrow points to the "Departments" dropdown, which lists "Boards and Committees" (including City Council, Agendas and Minutes, Forms & Permits, Public Records) and "DEPARTMENTS" (including Executive, Community and Economic Development, Library, Finance, Human Resources, Municipal Court, Police, Public Works).
- Search Bar:** A white search bar with the text "Search" and a magnifying glass icon.
- Navigation Bar:** A green bar with buttons for "CONTACT US", "EMPLOYMENT", "AGENDAS & MINUTES", "PAY MY BILL", and "WATER QUALITY INFO". A purple arrow points to the "AGENDAS & MINUTES" button.
- Calendar:** A calendar for May 7-11. A blue arrow points down from the "AGENDAS & MINUTES" button to the calendar. The calendar shows a meeting on May 9th: "Beautification Committee Meeting 1:30pm" at "Sankey Park Hut - Private".
- Footer:** A green box labeled "Calendar & Events" with a right-pointing arrow.

How do I watch previously held public meetings?



Water Quality Report



Sweet Home OREGON

City Services ▾ Departments ▾ Community ▾ How Do I? ▾

Apply for a Job

Apply for a Passport

Apply for a Special Event Permit

Watch a Live-stream

Contact the City

Submit a Request or Concern
View Staff Directory

Documents & Forms

View Documents & Reports
Adopted Budget
View Forms & Applications
File a Claim against the City

Events & Meetings

View Agendas & Minutes
View Calendar

Email Subscriptions

View Press Releases

Report Storm Related Issues

Report Streetlight Problem

Report Water Main Breaks

Volunteer

View the Budget

Social Media

Practices and Comments Policy
Like Us on Facebook
[YouTube Channel](#)

Sponsor a Hero Banner

Utility Information

Residential Water/Sewer Application
Stop Utility Service

Search



OREGON at its best

CONTACT US

EMPLOYMENT

AGENDAS & MINUTES

PAY MY BILL

HARVEST FESTIVAL



WHAT DO WE WANT YOU TO KNOW?



What is a Department of the City?

Administration, Finance, CEDD, Public Works, Water and Wastewater, Library, Police

What is NOT a Department of the City?

Sweet Home Fire District, Sweet Home School District, Pacific Power, Sweet Home Sanitation, Linn County Parks, Army Corps of Engineers, Department of State Lands, Northwest Natural Gas, ODOT

The Truth About Taxes

- Linn County Tax Assessors Office determines property tax amounts that homeowners must pay
- The City of Sweet Home has no authority or control over property assessed values
- Of all of the property taxes collected in Linn County, The City of Sweet Home only receives .379% from the County
- Yes, that above figure is correct!!! The City gets less than half of one percent of Linn County property taxes paid back to the city!

Fire District, School District, and Library Bonds and Levies are voted on and approved by registered voters, not the city or county

The City of Sweet Home only receives an average of \$73 per tax paying resident from your property taxes

If you do not live inside of city limits, the City does not receive property tax money from you.

Bonds and levies excluded

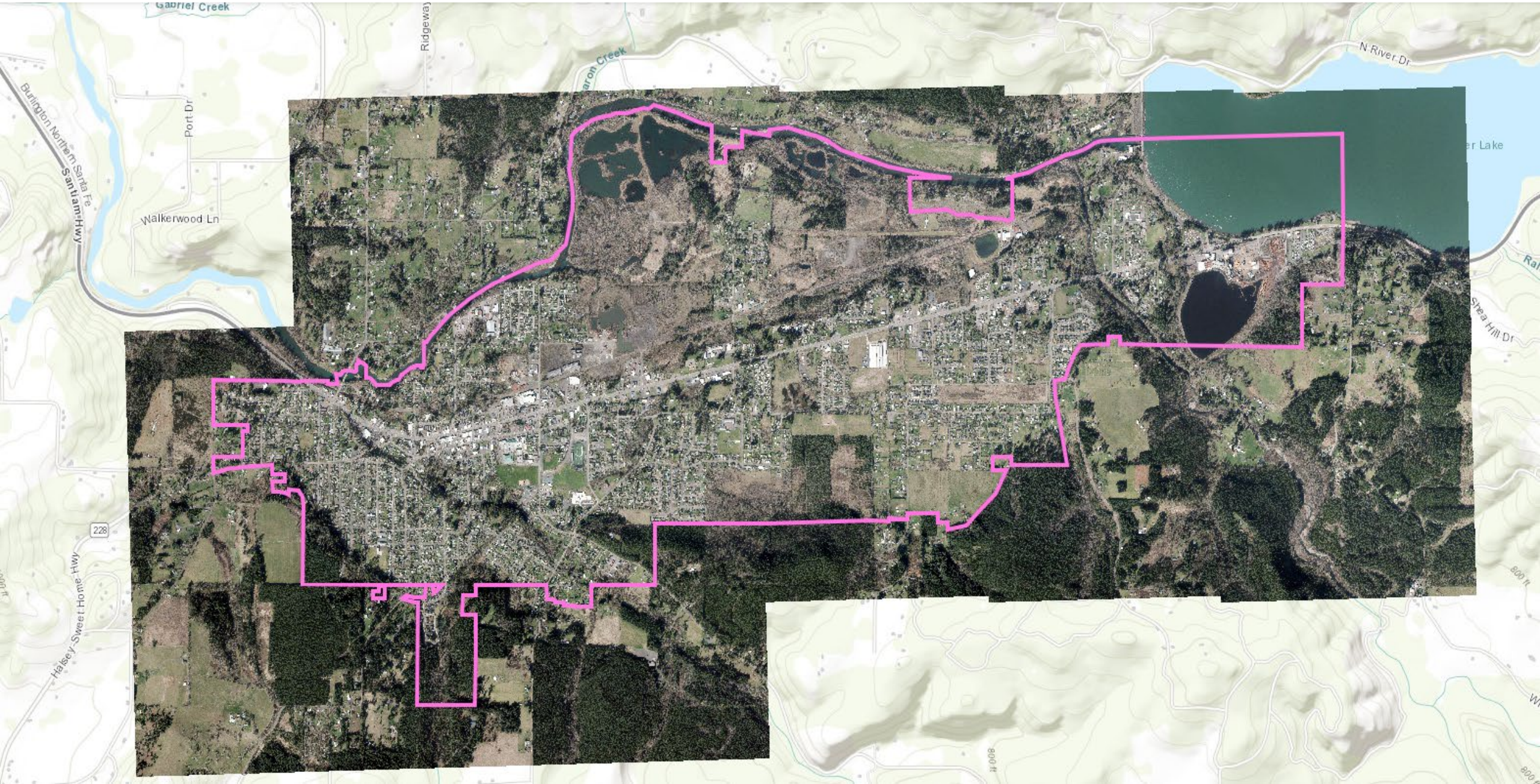
Bonds and Levies

Library and City Police Bonds are only voted on by registered voters INSIDE of City Limits and the money received from these bonds and levies will be used in a way spelled out specifically in the City Budget.

Fire District and School Bonds are voted on by registered voters inside of the School District and Fire District boundaries, and because they are not departments of the City, the City receives no money or gain from these bonds and levies.



CITY LIMITS MAP



**WHAT DO YOU
WANT TO KNOW?**

Questions???



QUIZ!!!

What are two ways the City uses to communicate?

What are at least three City departments?

On average, how much \$\$ does the City receive per resident from property taxes?

What is the best City in Oregon to live?

SWEET HOME!!!!

