

RESOLUTION NO. 26 FOR 2017

**A RESOLUTION TO DESIGNATE CITY PROPERTY AS SURPLUS AND
AUTHORIZE ITS LAWFUL DISPOSAL.**

WHEREAS, the City has determined there is no longer a use for the following City property;

Sankey Park – Caretaker Mobile Home
809 14th Avenue, Sweet Home OR 97321

WHEREAS, the City recognizes this property as surplus and considered little value that it should be sold and removed from Sankey Park;

NOW, THEREFORE, BE IT RESOLVED THAT:

The City of Sweet Home does hereby declare the property listed on the attachment as surplus and available for sale or its lawful disposal.

PASSED by the Council and approved by the Mayor, this 14th day of November, 2017.



Mayor

ATTEST:



City Manager – Ex Officio City Recorder

ADDRESS

GOLDEN WEST HOMES
 2445 PACIFIC BLVD. SOUTH
 P.O. BOX 1046
 ALBANY, OREGON 97321

4-80-1 Plant Number 03

Date of Manufacture HUD No.
8-29-94 ORE272364, ORE272365
 Manufacturer's Serial Number and Model Unit Designation
GW3ORWE113951 WH401F-1
 Design Approval by (D.A.P.I.A.)
RADCO

This manufactured home is designed to comply with the federal manufactured home construction and safety standards in force at time of manufacture.
 (For additional information, consult owner's manual.)

The factory installed equipment includes:

Equipment	Manufacturer	Model Designation
For heating	<u>COLEMAN</u>	<u>EB10A</u>
For air cooling		
For cooking	<u>GEN ELECT</u>	<u>JBSO3S1WH</u>
Refrigerator	<u>GEN ELECT</u>	<u>TBX18SASGLWH</u>
Water Heater	<u>RHEEM</u>	<u>71-40S</u>
Washer		
Clothes Dryer		
Dishwasher	<u>GEN ELECT</u>	<u>GSD500T48WA</u>
Garbage Disposal	<u>INSINKERATOR</u>	<u>I-56A</u>
Fireplace		
Smoke Detector	<u>FYRNETICS</u>	<u>1275E</u>

HOME CONSTRUCTED FOR Zone I Zone II Zone III

This home has not been designed for the higher wind pressure and anchoring provisions required for ocean/coastal areas and should not be located within 1500' of the coastline in Wind Zones II and III, unless the home and its anchoring and foundation system have been designed for the increased requirements specified for Exposure D in ANSI/ASCE 7-88.

This home has has not been equipped with storm shutters or other protective coverings for windows and exterior door openings. For homes designed to be located in Wind Zones II and III, which have not been provided with shutters or equivalent covering devices, it is strongly recommended that the home be made ready to be equipped with these devices in accordance with the method recommended in manufacturers printed instructions.

BASIC WIND ZONE MAP



DESIGN ROOF LOAD ZONE MAP — North 40 PSF — South 20 PSF
 — Middle 30 PSF — Other — PSF



COMFORT HEATING

This manufactured home has been thermally insulated to conform with the requirements of the federal manufactured home construction and safety standards for all locations

within climatic zone 2
 Heating equipment manufacturer and model (see list at left).
 The above heating equipment has the capacity to maintain an average 70° F temperature in this home at outdoor temperatures of -31 F.
 To maximize furnace operating economy, and to conserve energy, it is recommended that this home be installed where the outdoor winter design temperature (97 1/2%) is not higher than -1 degrees Fahrenheit.
 The above information has been calculated assuming a maximum wind velocity of 15 mph at standard atmospheric pressure.

COMFORT COOLING

Air conditioner provided at factory (Alternate I)
 Air conditioner manufacturer and model (see list at left).
 Certified capacity _____ B.T.U./hour in accordance with the appropriate air conditioning and refrigeration institute standards.
 The central air conditioning system provided in this home has been sized assuring an orientation of the front (hitch end) of the home facing _____. On this basis the system is designed to maintain an indoor temperature of 75° F when outdoor temperatures are _____ F dry bulb and _____ F wet bulb.

The temperature to which this home can be cooled will change depending upon the amount of exposure of the windows of this home to the sun's radiant heat. Therefore, the home's heat gains will vary dependent upon its orientation to the sun and any permanent shading provided. Information concerning the calculation of cooling loads at various locations, window exposures and shadings are provided in Chapter 22 of the 1981 edition of the ASHRAE Handbook of Fundamentals.

Information necessary to calculate cooling loads at various locations and orientations is provided in the special comfort cooling information provided with this home.

Air conditioner not provided at factory (Alternate II)
 The air distribution system of this home is suitable for the installation of central air conditioning.

The supply air distribution system installed in this home is sized for a manufactured home central air conditioning system of up to 42,000 B.T.U./hr. rated capacity which are certified in accordance with the appropriate air conditioning and refrigeration institute standards, when the air circulators of such air conditioners are rated at 0.3 inch water column static pressure or greater for the cooling air delivered to the manufactured home supply air duct system.
 Information necessary to calculate cooling loads at various locations and orientations is provided in the special comfort cooling information provided with this manufactured home.

Air conditioning not recommended (Alternate III)
 The air distribution system of this home has not been designed in anticipation of its use with a central air conditioning system.

INFORMATION PROVIDED BY THE MANUFACTURER NECESSARY TO CALCULATE SENSIBLE HEAT GAIN

Walls (without windows and doors).....	U" .051
Ceilings and roofs of light color.....	U" .030
Ceilings and roofs of dark color.....	U" .035
Floors.....	U" .087
Air ducts in floor.....	U" .119
Air ducts in ceiling.....	U" .119
Air ducts installed outside the home.....	U" .119

The following are the duct areas in this home:

Air ducts in floor.....	100	sq. ft.
Air ducts in ceiling.....		sq. ft.
Air ducts outside the home.....	78.5	sq. ft.

To determine the required capacity of equipment to cool a home efficiently and economically, a cooling load (heat gain) calculation is required. The cooling load is dependent on the orientation, location and the structure of the home. Central air conditioners operate most efficiently and provide the greatest comfort when their capacity closely approximates the calculated cooling load. Each home's air conditioner should be sized in accordance with Chapter 22 of the American Society of Heating, Refrigerating and Air Conditioning Engineers (ASHRAE) Handbook of Fundamentals, once the location and orientation are known.

OUTDOOR WINTER DESIGN TEMP. ZONES



Brand: WINTERHAVEN
Division: Albany 03
Model Specifications
January 14, 1993 Rev. June 1, 1994

Floor System

Design :Longitudinal, 2"x6"
:5/8" Cresdeck
Foundation Ready :Optional
Bottom Board :LSD Typar
Module :13'-6" &12'-8" Floor System

Interior Walls

Design :2x3 or 2x4 Studs 16" O.C.
Finish :1/2" Gyp Lite Texture w/ Satin
Latex paint

Exterior Walls

Design :7'-6" Ceiling height
:2 x 6 Studs 16" O.C.

Roof/Ceiling

Design :Roof Load = 30#
:3/12 Pitch Truss Rafter 16" O.C
:Optional 4/12
:3/8" Plywood Sheathing
Composition Roof :Fiberglas 20 yr
:Poly Vapor Barrier ceiling
Ceiling Finish :1/2" Gyp Ceilings 16" O.C.
Lite Texture Satin White
Cathedral Ceiling : Throughout
Eave : 16" overhang front, sides on S models (rear optional)

Insulation * SUPER GOOD CENTS/MAPS *****

Floor ** : R-36 Fiberglass
Sidewalls ** : R-21 Fiberglass
Roof ** : R-38 (min)Blown In

Exterior

Design :1/2'Hardboard Primecoat(per print)
Finish : Latex paint (per Call Out)
Trim :Hardboard trim all around (see prints)
Fascia :2x8 Rough Sawn with latex Paint
Paint :Call Out Color exterior
Recessed Entry :Optinal
Bottom Trim :1 x 3 Rough Sawn (per print)

Doors/Windows

Front Door	: GW 2 (36" steel door w/ deadbolt & door knocker)
Rear Door	: GW10 Inswing w. deadbolt
Sliding Glass Door	: ALPINE WHITE VINYL ARGON WITH MATCHING SCREEN (see plan)
Interior Doors (LOOSE SET)	
Passage	: Purchased White Flush Door -30"
Hardware	: Bright Brass w/ Two (2) Mortised hinges
Locksets	: Round Brass Knobs Privacy= Baths, M/Bedroom Passage= All other rooms
Wardrobe Doors	: White Flush w/finger pull
Wardrobe Header	: See Moulding Detail Sheet
Dual Glazed Windows	: ALPINE WHITE VINYL ARGON : See Moulding Detail Sheet
Grid Windows	: Optional

Electrical

Main Panel	: 200 Amp Main
GFI	: 1(one) Exterior & 1 (One) Per Bath
Smoke Detector	: Standard Per Code (electric w/ battery)
Telephone Jack	: Optional
Television Jack	: Optional

Lighting Schedule

Front Porch Light	: White # 1197-30-333
Rear Porch Light	: White # 1197-30-333
Entry Light	: Optional
Central Light	: 1007 PB-333 Swivel w/ 6" globe
Walk-in Wardrobes	: 1007 PB-333 Swivel w/ 6" globe
Bedroom Lights	: Optional 1007 PB-333 Swivel w/ 6" globe 2nd & 3rd
Bath Lighting;	
Soffit Light	: Optional
Bath Central Light	: 1007 PB-333 Swivel w/ 6" globe
Over Sink	: 229-30-624
Kitchen Lighting;	
Over Sink Light	: 1007 PB-333 Swivel w/ 6" globe
Kitchen Central Light	: 1007 PB-333 Swivel w/ 6" globe
Dining Chandelier	: 2335-T-19-338
Breakfast Light	: 1007 PB-333 Swivel w/ 6" globe

Plumbing

Design	: Per floor plan using 1/2" & 3/4" poly pipe
Shut off Valves	: 1/2" @ Sinks, Toilets
Plumb for Washer	: Standard
Water Heater	: 30 Electric
Hose Bibbs	: Optional

Cooling/Heating

Furnace :Down Flow, F/A Electric Heat
Air/Ready :Optional (Electrical J-Box w/8wire thermostat wire)

Kitchen Design

Design :Square Alder Raised Panel Door
**See Miscellaneous For Specs
Sink :21" x 32" Porcelain
Faucet :Metal 2- knob Crystal Glow
Garbage Disposal :Optional
Range :Elect. GE JBS-03
Refrigerator :TBX14SA
Dishwasher :Optinal
Range Hood :30" fan w/light
Counter top :Laminate top w/backsplashat sink area
Drawer Guides :Roller/monorail w/wood drawers
Drawers :Purchased white sides,fronts,backs, 3/8" bottom

Decor

Window Covering : See Drapes Spec Page
Carpet : Grp II L/R, D/R, Hall,M.Berdm, Entry
Carpet Pad : 3/8" Foam w/ skin pad
Linoleum : Diamond Floor. Kitchen, M. Bath, G.Bath, Utility
Berdoom 2 & 3

Utility Design

Plumb for Washer : Standard
Wire for Dryer : Standard
Shelf Over Washer/Dryer :N/A
Cabinet : 2-Overhead w/ closet Pole

Bath Designs

Design :Square Alder Raised Panel Door
(** See Miscellaneous For Specs)
Fixture :White
Lavy Sinks :17" Plastic Oval
Tub/Shower : 1 Pc. Fiberglass Tub/Shwr Combo
or fixtures shown on std plan
Toilets :Standard
Exhaust Fans :Standard w/timer
Medicine Cabinet :N/A
Mirror :Full width Mirror w/ J Channel
Faucets: Lavy : Metal 2 Knob Crystal Glow
Tub/Shower : Single Lever -Chrome #8744/45831/RP20773
Drop-in Tub : Metal Deck 2-knob
Shower : Metal w/Knob Crystal glow
Drain :Pop-up
Counter top :Laminated with back splash

Miscellaneous

Cabinets:

Doors	:Square Alder Raised Panel Doors
Face Frame	:Light Alder Stiles & Rails
End & Bottom Panel	:Natural St. Helens Birch
Design	:Overhead cabinets & base cabinets lined w/ white panel w/ adjustable shelves in kitchen O/H Cabinets (see print for detailed location)
Shelving	:3/4" Vinyl wrap two side particle board throughout w/snap on 3/4" white gimp for shelf nosing except for adjustable shelves use MDF Board
Wardrobe Shelf	:See Drawings

Moulding

Interior Doors	:2" Colonial Casing(Waterfall) #064 Pure White :Jamb 1/2" x 3-3/4" White #538 :Stop 3/8"x 1-1/4" #887 Pure White
Exterior Doors	:2" Colonial Casing(Waterfall) #064 Pure White
Floor Moulding:	
Floor To Tub	:Same as above #064 Pure White
Floor to Cabinets	:2" Colonial Casing(Waterfall) #064 <u>Light Alder</u>
Entry Way Floor	: <u>Optional</u> -2" Colonial Casing(Waterfall) #064 Pure White
Linoleum To Wall-Utility	:2" Colonial Casing(Waterfall) #064 Pure White
Carpet To Wall	: <u>Optional</u> (2" Col. Casing Waterfall #064 Pure White)
Windows:	
General	:3/8" GYP w/ 3/8" U-Channel 3 Sides Metal OSC all 4 sides White painted Pine Sill
Kitchen	:3/8" Gyp w/ 3/8"U-Channel 3 Sides Metal OSC all 4 sides Laminated Sill
Guest Bath Window(W-12)	:White Panel 4 sides w/ #064 Casing all 4 sides Pure White
Wardrobes	:Textured Drywall w/ metal OSC Wardrobe Header Gyp Factory edge
Cabinet O/H Moulding	:Light Alder Crown Mldg #068
Ridge Beam	:Textured drywall w/ metal OSC shipped loose

Wallpaper:

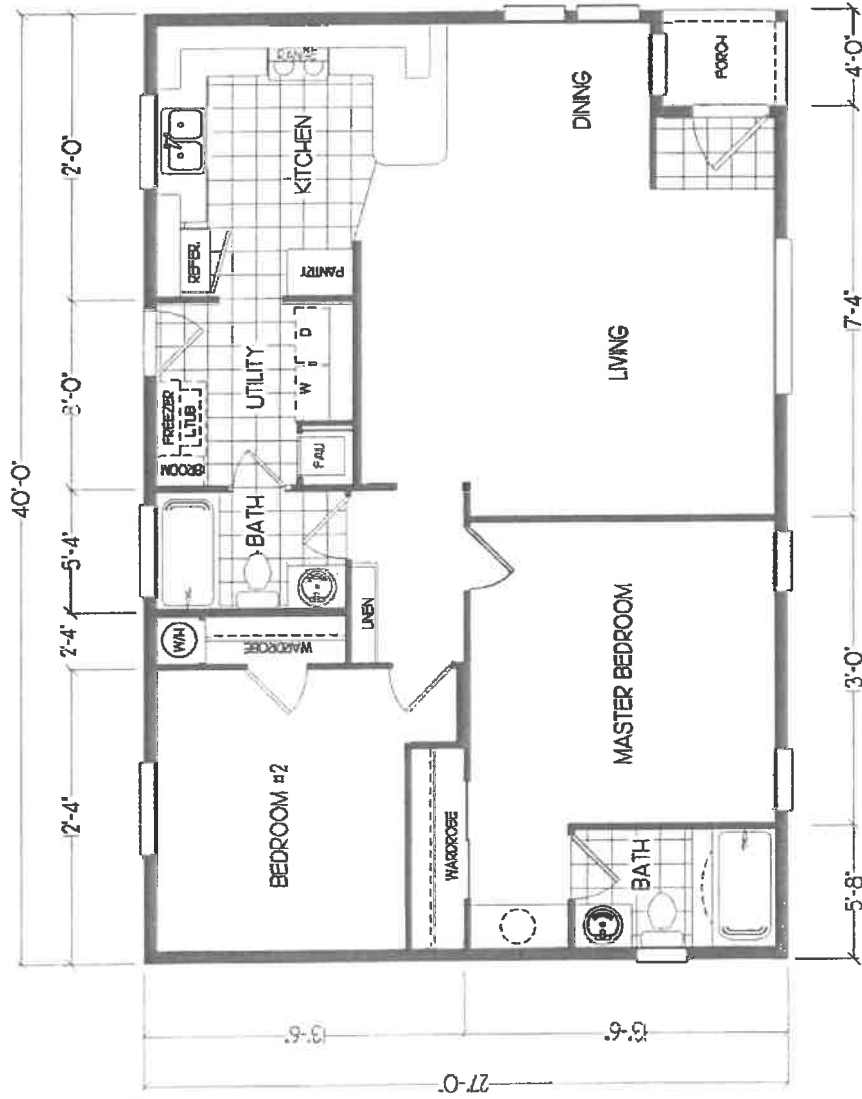
Location	: Above Kitchen Backsplash per Floor Plan (thru range area if applicable)
----------	--

Drapes:

Pleated Side Panels : Optional
Valances : 14" rod Pocket Valances L/R, D/R, Brakfast, F/R,
Study, M. Bedroom, Bedroom 2 & 3
Tub Treatment : Drape & Tub Swag- both baths
(except W-12 window)
Mini-Blinds : Throughout- except bathrooms

Additional Features to be included with this bid:

- 40 Gallon Water heater
- 60" Stall Shower w/Glass Enclosure in Master Bath
- Laundry Tub In Utility.
- Optional Linen Cabinet.



GOLDEN WEST HOMES
 2425 PACIFIC BLVD. S.
 ALBANY, OREGON 97321

DRAWING	MODEL NUMBER	DATE	REVISED	PAGE	SHEET
	WH 401FI	03-23-94			